

Loading the PDF Settings

Download the .zip archive named *PDF Export Presets InDesign.zip* that contains 2 files. They were created on a PC, but they work just fine on the Mac as well.

1. **OPI High Quality INDD.joboptions**
(The PDF preset to load for InDesign CS2 [will work for CS3, as well])
2. **Saved PDF Export Presets.pdfs**
(The PDF preset to load for InDesign CS1. The name that shows up after loading is OPI High Quality CS1.)

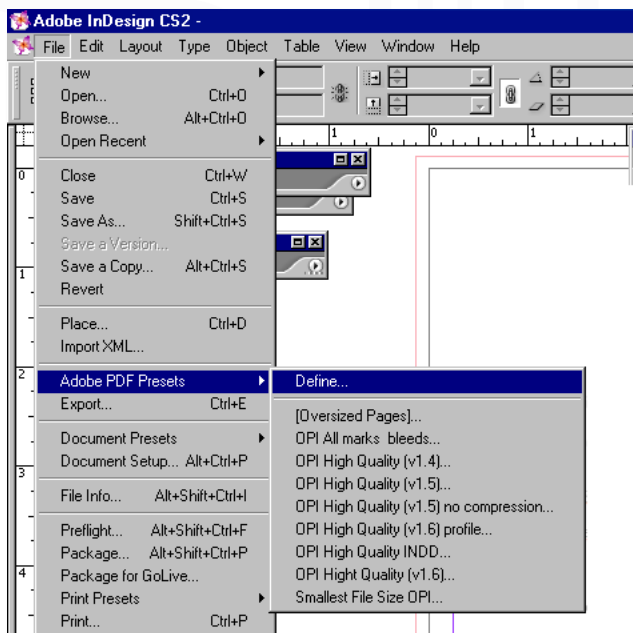
You can either load the settings you downloaded through the Adobe PDF Presets menu (this paper shows you how) or use the windows on the next pages as a guide for the options you choose when you create and name your own. If you're going to load the settings (the easiest way), extract the files from the .zip to your desktop or hard drive, so when you choose "Load" you can navigate to the appropriate file.

About crop marks...

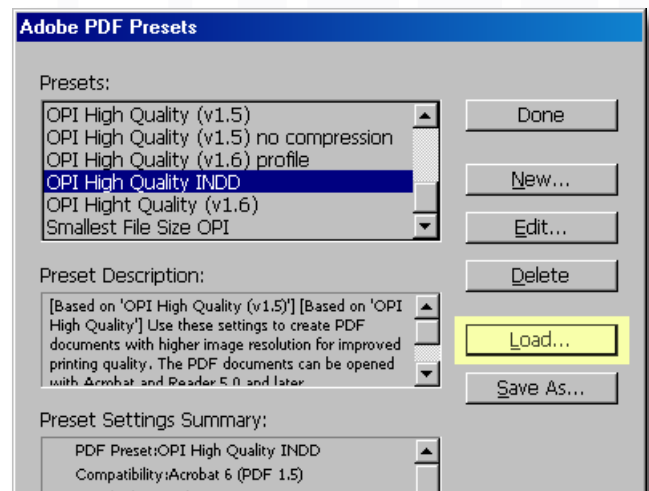
Please do not include them on text files. Our imposition software adds the crop marks where they are needed. However, if your document will bleed, make sure you set the original document to bleed 1/8" all around. The PDF settings from OPI will take that into account and give you the correct sheet size, e.g. a 6" x 9" will become 6.25" x 9.25"

If the file you are sending is a cover (see the document *Creating a Cover Spread.pdf*), please set the bleed to 1/2" all around (your actual bleeds only have to extend 1/8") so you can add spine marks. Then make sure you check "Crop Marks" under "Marks and Bleeds" when you export the PDF so you will get the cover trim marks as well.

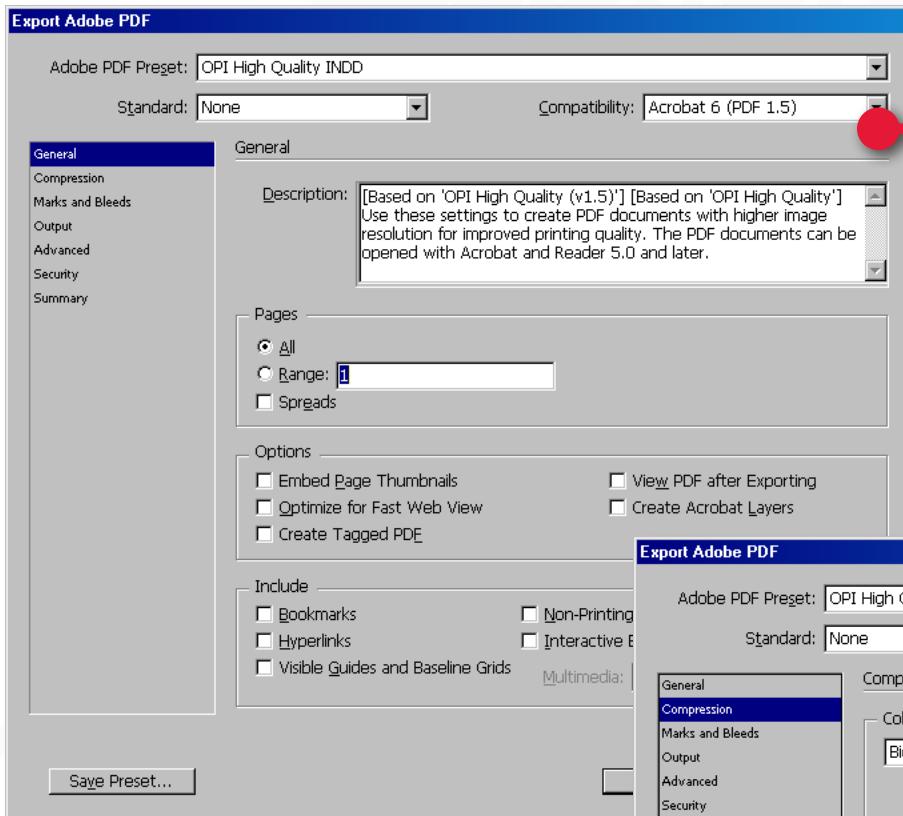
Step 1...



Step 2... Choose "Load..." and navigate to the OPI High Quality INDD.joboptions* file



*** It will be the "Saved PDF Export Presets.pdfs" file if you are using InDesign CS.**

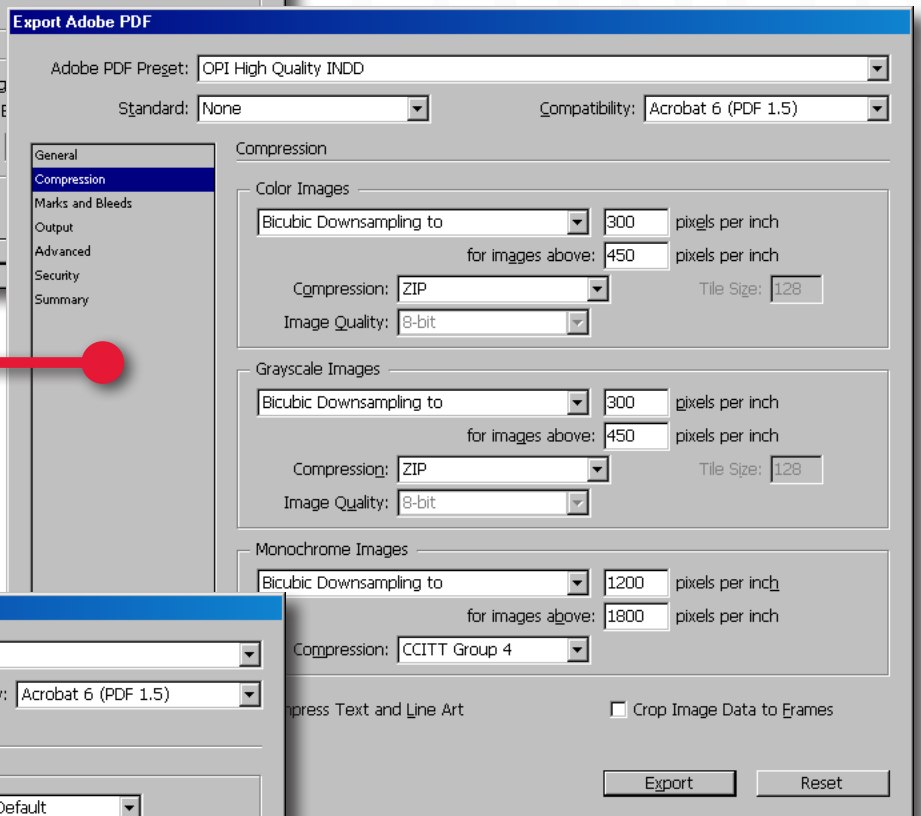


We use PDF 1.5. It is compatible with all our machines and renders any effects you have created with higher accuracy.*

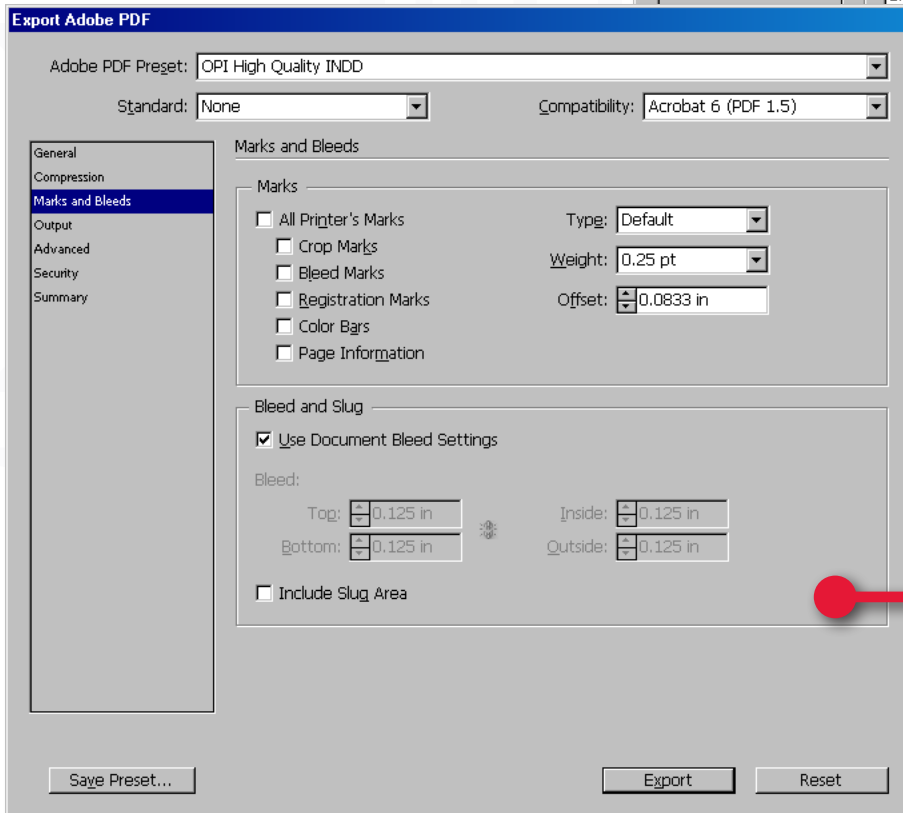
*If you are utilizing transparency (such as drop shadows), you will get more reliable results if you print to postscript and then distill your file with Acrobat Distiller.

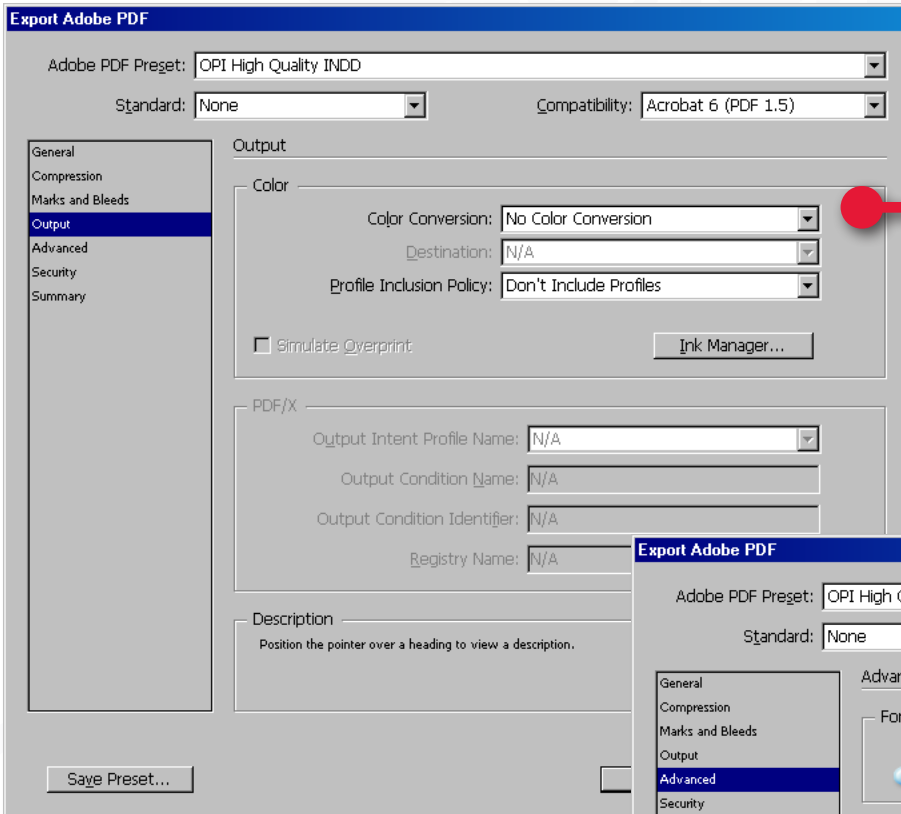
(See the document "Printing to Postscript - InDesign&Quark.pdf" for instructions.)

Images higher than 300 DPI will not produce a better quality image, just a larger PDF and longer time at the RIP. ZIP compression is best, since it is "lossless"– meaning compressing without losing detail.



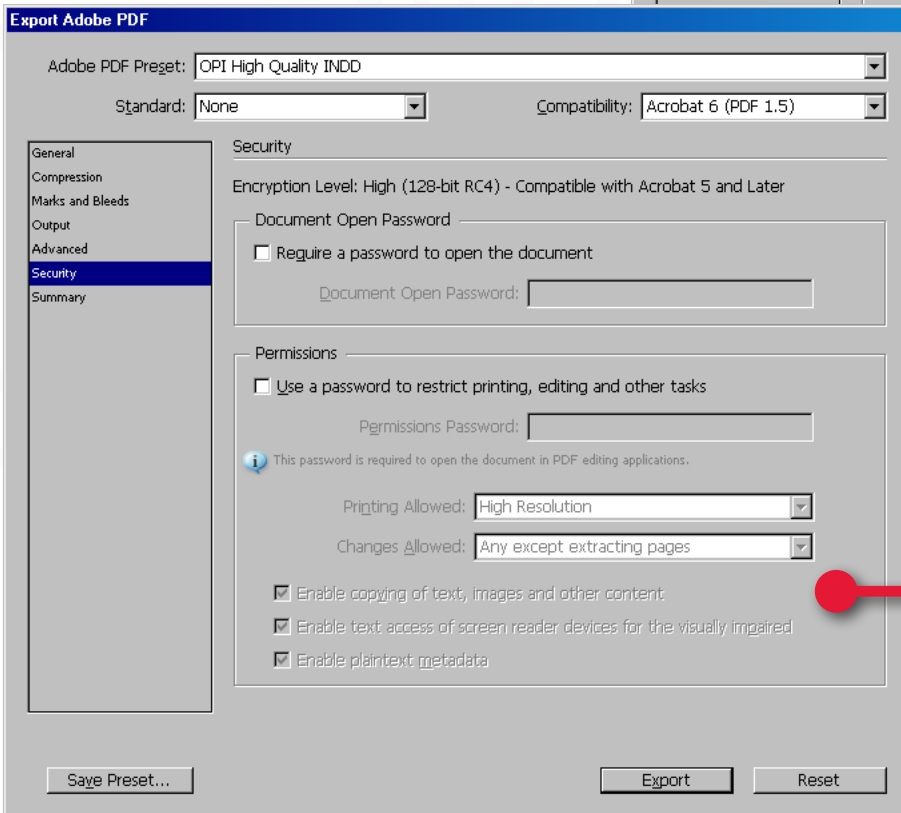
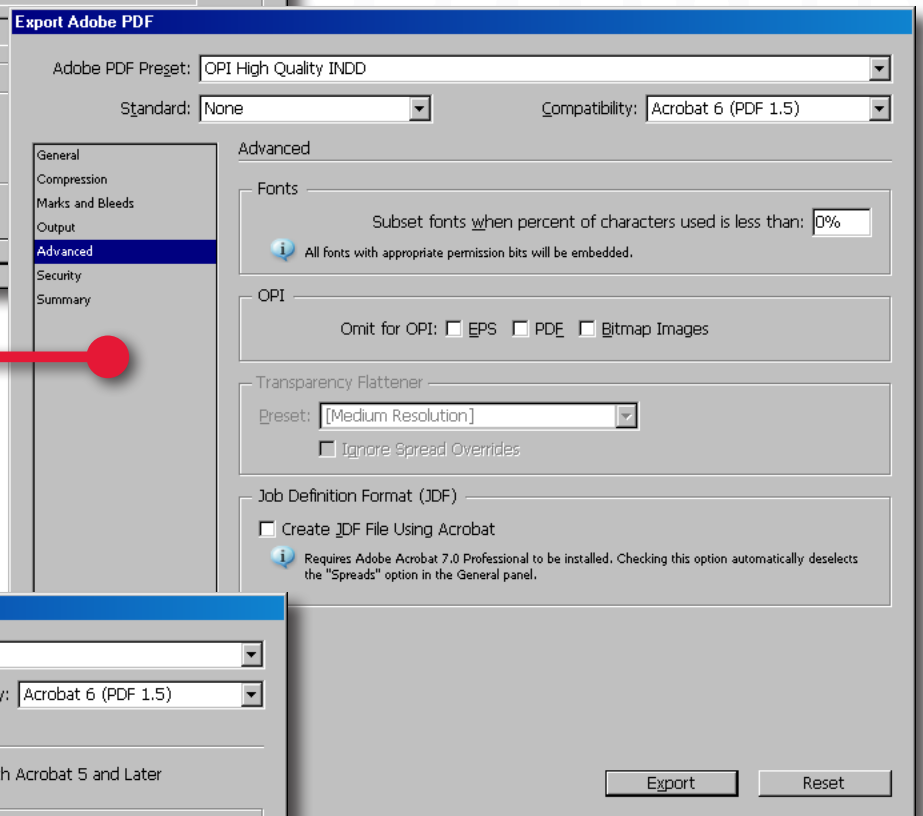
If your document will have bleeds (images or screens that keep going past the edge of the paper), set your bleeds to 1/8" under the "Document Setup" window. That way they are included in the output page size.





Don't set any output or ICC profiles for your document, as it is sure to be different than our output devices. Please do make sure that your text is 100% black and not made from RGB. All RGB images will convert to CMYK at our color printer (or grayscale at the B&W printer). You should convert them first so you will have a better idea of what will output. Many RGB blues look much brighter on the screen than they will print.

Setting the "Subset fonts when percent..." to 0% completely embeds your fonts, the setting we prefer.



Do not set any security on your document, even to prevent changing it. If you request a simple change that we can do, security will prevent that.